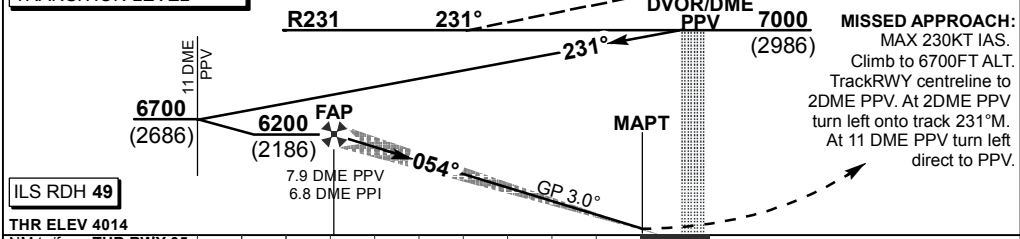


29°20'E 29°30'E 29°40'E

PPV DME	7	6	5	4	3	2	
ADVISORY ALT (HGT)	5870 (1856)	5550 (1536)	5230 (1216)	4910 (896)	4590 (576)	4270 (256)	

TRANSITION ALT 9000	R231	231°	9000	INA ALT: 9000
TRANSITION LEVEL ATC				



ILS RDH 49
THR ELEV 4014
NM to/from THR RWY 05

CHANGE: Advisory ALT	Straight-in Approach	OCA (H)	A	B	C	D	GS	KT	80	100	120	140	160	
		With 3.5% Missed APCH Gradient	CAT I	4214(200)	4214 (200)	4214(200)	4214(200)	FAP to THR	M:S	4:57	3:57	3:18	2:49	2:28
		With 2.5% Missed APCH Gradient	CAT I	4730(716)	4730(716)	4730(716)	4730(716)	Rate of descent	FPM	432	540	649	757	865
		Circling	HGT related to AD ELEV	4690(614)	4980(904)	5210(1134)	5210(1134)	NOTE: 1. MAX 230KT IAS on Missed Approach. 2. ILS/DME PPI co-located with GP transmitter. 3. Circle to land at the discretion of the pilot in command.						